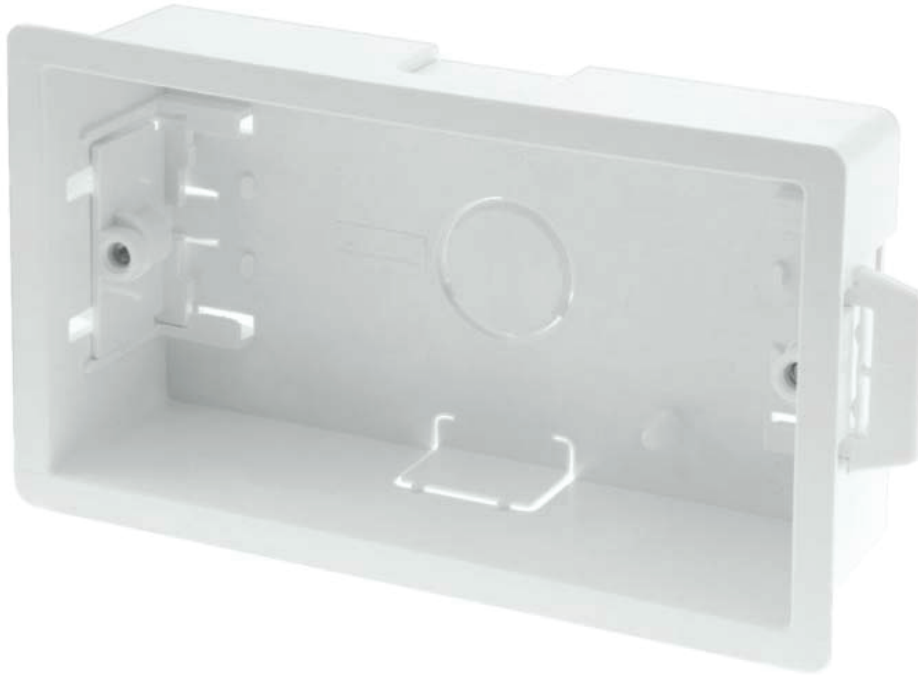


SPECIFICATION SHEET

Product Code WA088P

Description 2 Gang 35mm Deep Dry Lining Box



General Information	
Cut Out Required	135mm x 75mm
Outer Flange Size	143mm x 83mm x 35mm
Material composition	Body: White ABS Lugs: White ABS Terminals: Brass Thread
Back Box Depth	35mm
Maximum Board Thickness	18mm
Knockout Size	Top: 20mm rectangular knockout Bottom: 20mm Rectangular knockout Rear: 25mm diameter knockout
Warranty	10 Year Domestic
Standards	
BS 4662 + relevant parts of BS 5733:2010	
Additional Information	
Can be connected to any combination of WA087P, WA106P & WA107P dry lining boxes via the GA100 'Ezylink' to provide the neatest installation of cavity boxes possible.	